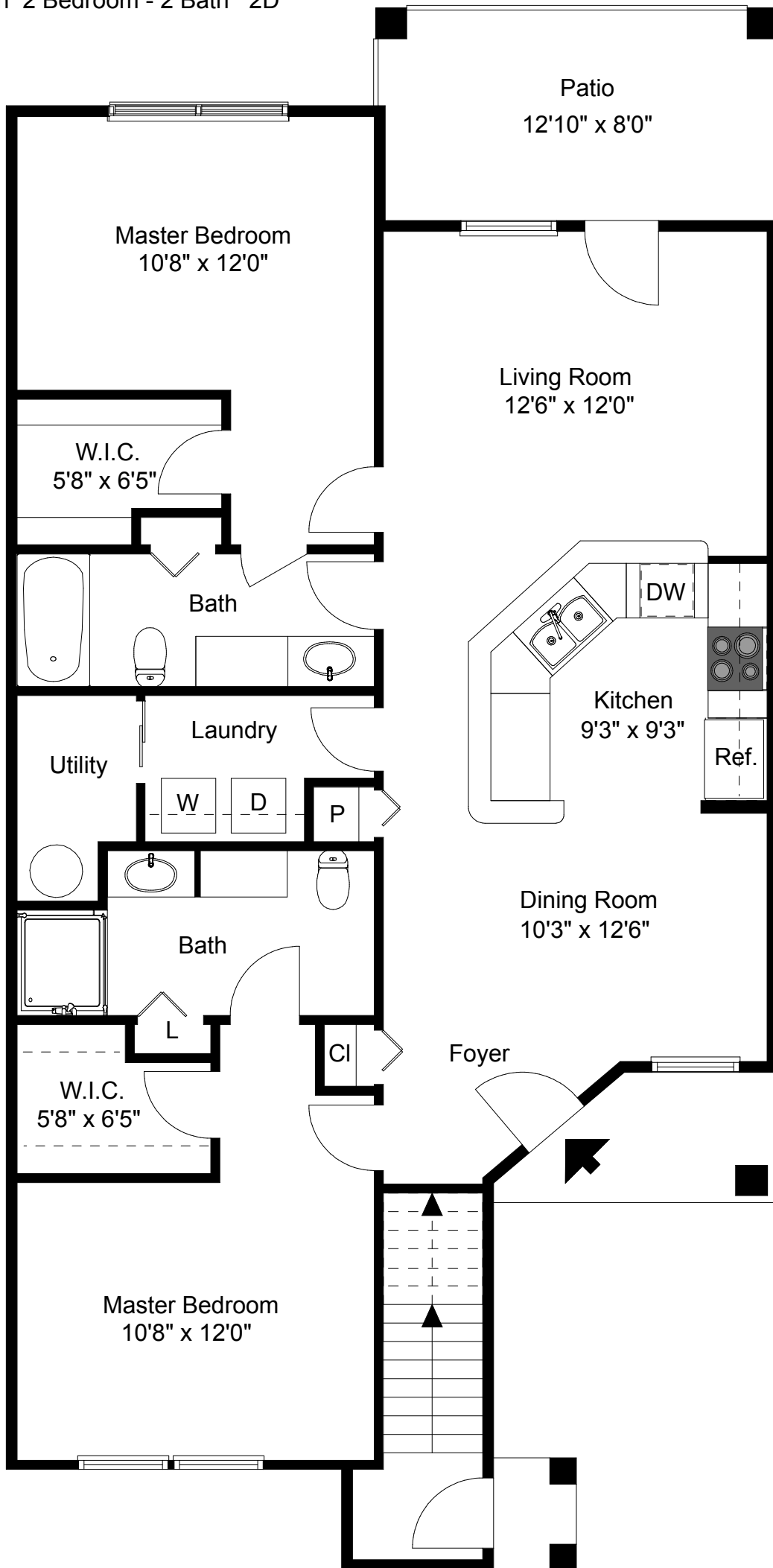


The Charleston 2 Bedroom - 2 Bath 3D



For illustrative purposes only. Materials, measurements and details might differ from the actual property.

The Charleston 2 Bedroom - 2 Bath 2D



The Landings, offers you all of the comforts and conveniences of a new home with the benefit of a professional management and maintenance team to provide you with a superior quality lifestyle.



Your Resident Services

- *Package Acceptance Service*
- *Restaurant and Catering Referrals*
- *Adult and Children's Activities*
- *Senior Citizen's Programs*
- *Resident Business Center and Conference Room*
 - *Computer*
 - *Copy Machine*
 - *Facsimile*

Quality Features

- *Large Apartments*
- *Plenty of Parking*
- *Single Hung, Double Glazed Windows*
- *Concrete Sound Insulation Between Floors*
- *Extra Sound Deadening Board on ALL Party Walls*
- *Energy Saving Gas Hot Water and Heating*
- *Fully Louvered Wood Bifold Doors*
- *Lever Handles on Front Doors*
- *Architectural Lighting Design*
- *Bright, Open Floor Plans*
- *Private Entrances to all Apartments*

1700 Lookout Lane
Clifton Park, New York 12065
(518) 383-6700
Fax (518) 383-3058